

10/3/2017

Hello Council members,

I've had time to sit + ponder what would be some possible positive changes to the Gustavus Beach. I'm concerned for visitors who have looked forward to coming to Gustavus, then more than likely Glacier Bay National Park. Their arrival may be tarnished a bit, starting with coming in at deck and having to walk the long way up approach. They are met with limited places to sit, as they wait. Especially rugged on rainy days, of which we have many. Having a more attractive cement bench, instead of old jersey barriers may be more inviting.

A bike rack placed somewhere by beginning of approach, I think would be used by many. I even thought a bike rack by generator shed on "island" may be useful to help cut down on deck with congestion in limited parking spaces for our charter fleet. They would still want to offload + pick up gear with their trucks, but perhaps they could be encouraged to use bicycle + ride to bike rack for day trips.

On to visitor sign area - perhaps a shelter with bench for those waiting for buses + taxis. Picture of enclosed looked similar to Kiosk covered shed. A table for those who want to sit + review any brochures they have to study, write in journals, etc. (not for picnics w/ fires - mainly area for pickup + dropoffs)

Looked into requirements for camping areas for special needs folks. Enclosed "google map" shows distance between a possible camp location and restrooms, trash, & parking. Another basic camp area could be across road behind big trees.

Since many of us are unable to walk down to River via west beach, I propose building a new road. This one could go across from tank farm parking lot - cross to the edge along Salmon River. It would provide a way to get closer to the River bank, view the sunsets, see the mountains, & dip our feet in "sahawadi". We are so fortunate to live here, lets give our visitors and locals the very best we can.

There are many seniors, as well as younger children, and many in between here in Gustavus. How about benches placed along roads through out town, for those who want to get out and enjoy, but need to stop & rest often.

Enclosing pictures for you all to review, as well as ideas on seating.

Thanks for hearing me out on all this.

Sylvia Pedersen

907-697-2433 Home

907-723-2611 cell

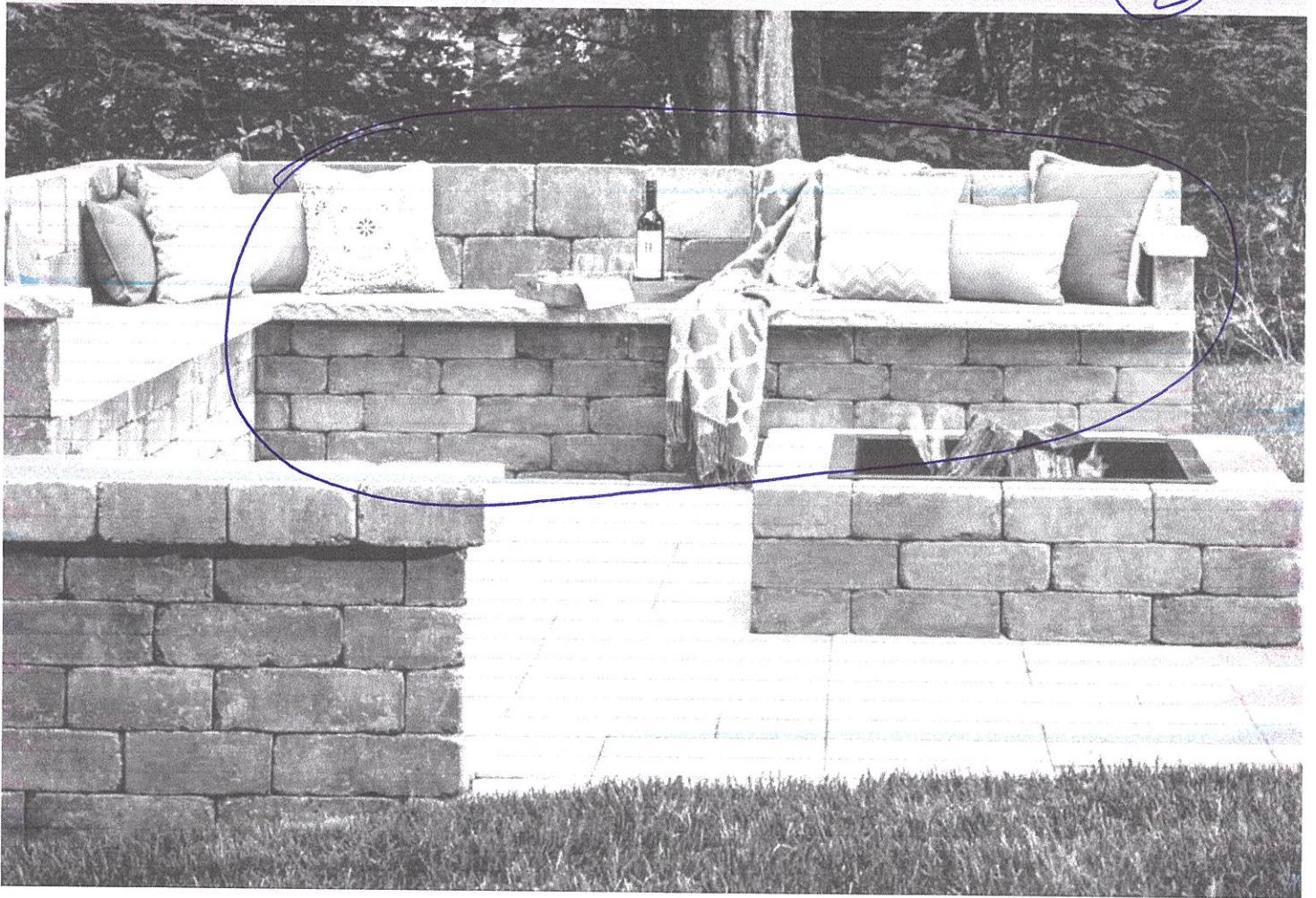
①



Current cement jersey barrier at end
of Dock Rd. culdesac. Not very attractive
1st encounter to town —

6:32 PM, Fri Oct 29

image1.jpeg



Cement wall/bench to be built for
our visitors + residents to use while
awaiting ferry carts, rides, etc.



Area in front of tank farm
for proposed shelter + table

4

History



Shelter in front of tank farm,
I would suggest a bench inside -

Pilot Rock

PRODUCTS ▾ ABOUT US ▾ RESOURCES ▾ JOIN OUR TEAM ▾ SEARCH 🔍

5

Model LH-2 - Lantern Holder With 2 Arms

SKW: LH
Safely hang camping lanterns. Available with Wheelchair Accessible Option.

Accessible Bench - B110 Series

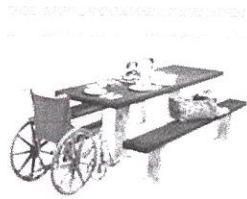
SKW: B110C
Park Bench meets Accessibility Guidelines

ASW-20 Series Accessible Grills

SKW: ASW-20
This grill meets the ADA guidelines for accessibility and operability.

ASW-24 Series Accessible Grills

SKW: ASW-24
This larger grill meets the ADA guidelines for accessibility and operability.



End Accessible Multi-Pedestal Picnic Table - APT Series

SKW: APT
Permanent, secure and ADA Compliant with 8 ft. table and 6 ft. seats in a variety of materials.



FS-30 Accessible Campfire Ring

SKW: FS 30
This ADA compliant Campfire Ring features a single level cooking grate



FSDW-30 Accessible Campfire Ring

SKW: FSDW-30
This Campfire Ring features a double wall design

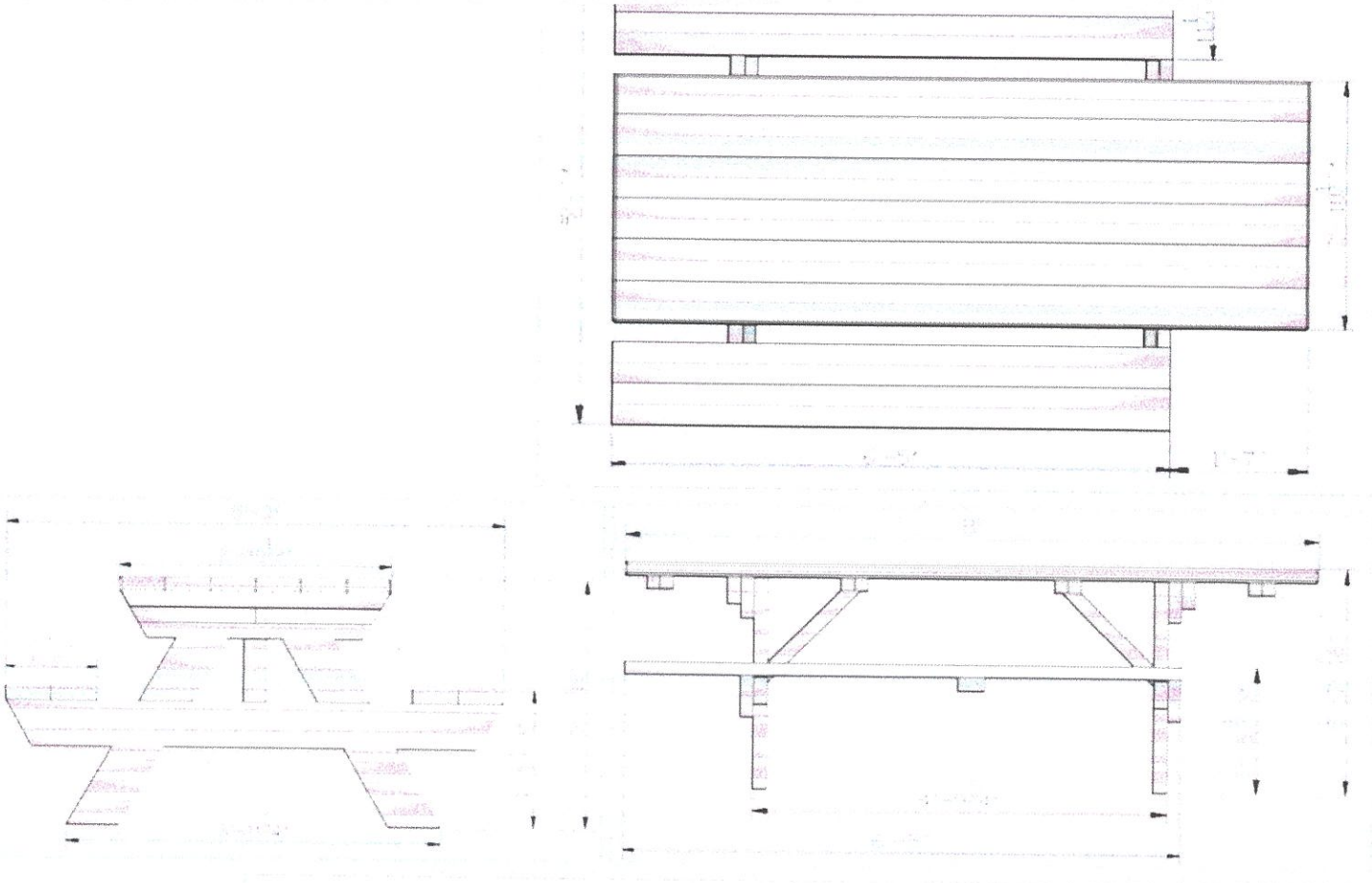


FSW/SL-30 SNOW LOAD Rated Accessible Campfire Ring

SKW: FSW/SL 30
This ADA compliant Campfire Ring offers a snow load rated swivel cooking grate

ADA idea for campfire ring

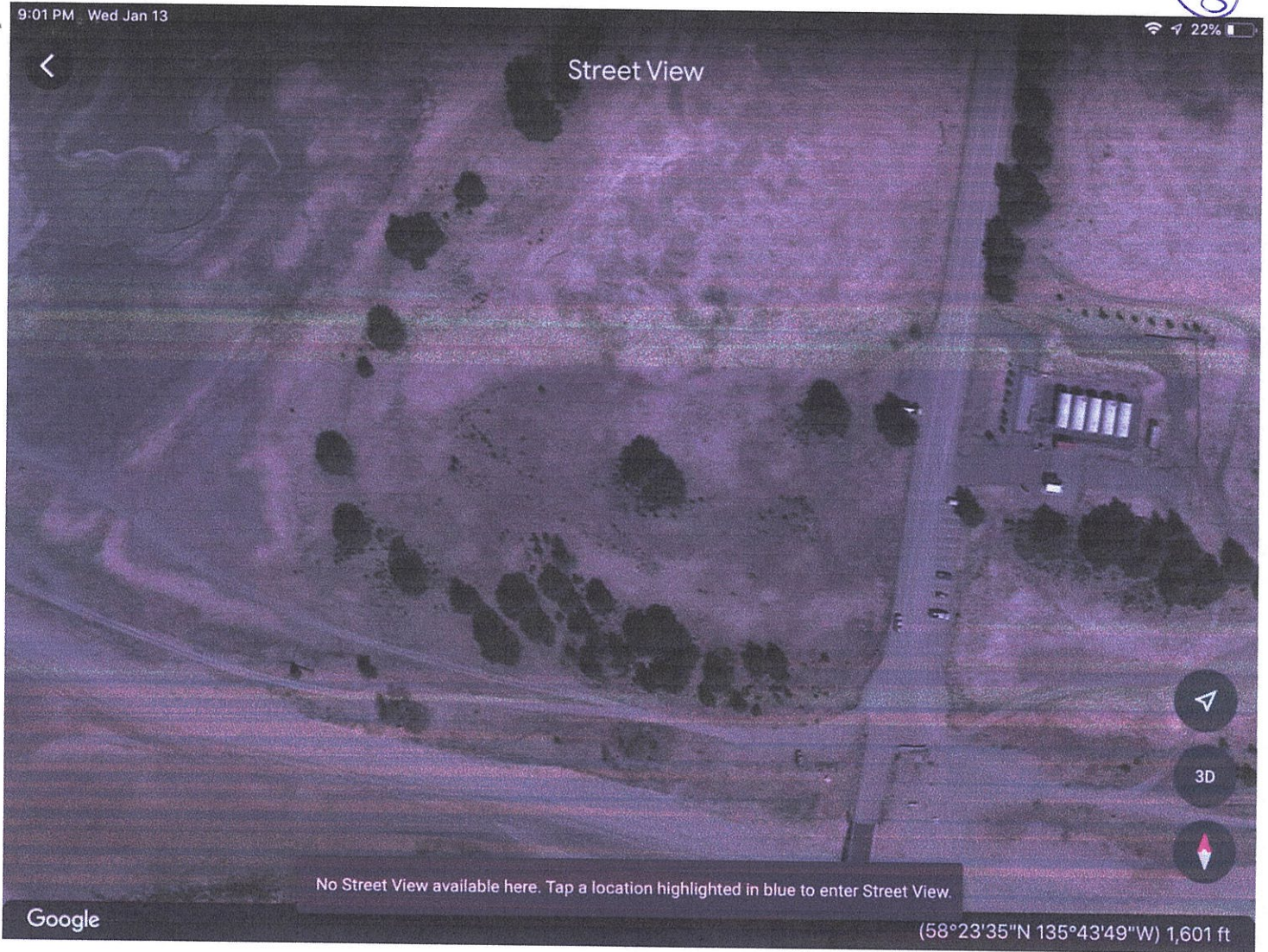
6



ADA specs on picnic table -
longer on 1 end to be wheelchair
accessible



Looking from tank farm toward Salmon River



Map of Dock Rd + west side of beach



Distance ⓘ
320 ft -



Proposed area for composite access
from tank farm

6:36 PM, Fri Oct 29

84%

Done

IMG_0876.PNG



Distance ?
74.3 ft ▾



Proposed ADA compliant camp site
with closer access to restrooms, trash,
& visitor signage

6:36 PM, Fri Oct 29

84%

Done

IMG_0879.PNG



Distance ?

761 ft ▾



Proposed road "View Drive" that could go west from Dock Rd access from tank farm - small "logged" parking spot to have another beach access, as well as Mt. View



Just a reminder of what beauty
there is in Fairweather Mts.

How about a wooden descriptive
sign placed with Mt. names + heights -

COVID-19 Update: Our factory is back to operating at full capacity. Please contact your local sales representative to make an enquiry. Contact Us (<https://streetfurniture.com/contact/>)

ENQUIRE NOW (<https://streetfurniture.com/enquire-now/>)

streetchat (<https://streetfurniture.com/streetchat/>) how to place seats in the city



(<http://instagram.com/streetfurniture>) (<https://www.youtube.com/channel/UC7yF5YpWDeEJnjUL1rFMMhw>)

How to Place Seats in the City



StreetChat delves into Jan Gehl's iconic book 'Life Between Buildings'

(<https://www.bookdepository.com/Life-Between-Buildings-Jahn-Gehl/9781597268271>) to bring you a summary on how to place seats in the city.

"Only when opportunities for sitting exist can there be stays of any duration," he says.

Seats are crucial to the success of a public space. The good news is that they are a relatively cheap and easy to install solution for improving an outdoor environment.

Point 1. Location, location

Good opportunities for sitting mean people can comfortably eat, read, people-watch and socialise. And this can only happen when conditions are just right.

Gehl advises:

- A comfortable relationship to the sun and wind creates a good microclimate, essential for sitting.
- Benches placed in the middle of open spaces may look good in drawings, but on site can feel exposed and uncomfortable.
- The edge of an open space is the most popular place to sit, with a good view of what's going on, and a protected back. Niches, spaces within spaces and corners all feel secure and are good for sitting, provided there is a clear view.



Framing the view

Point 2. Make it inclusive

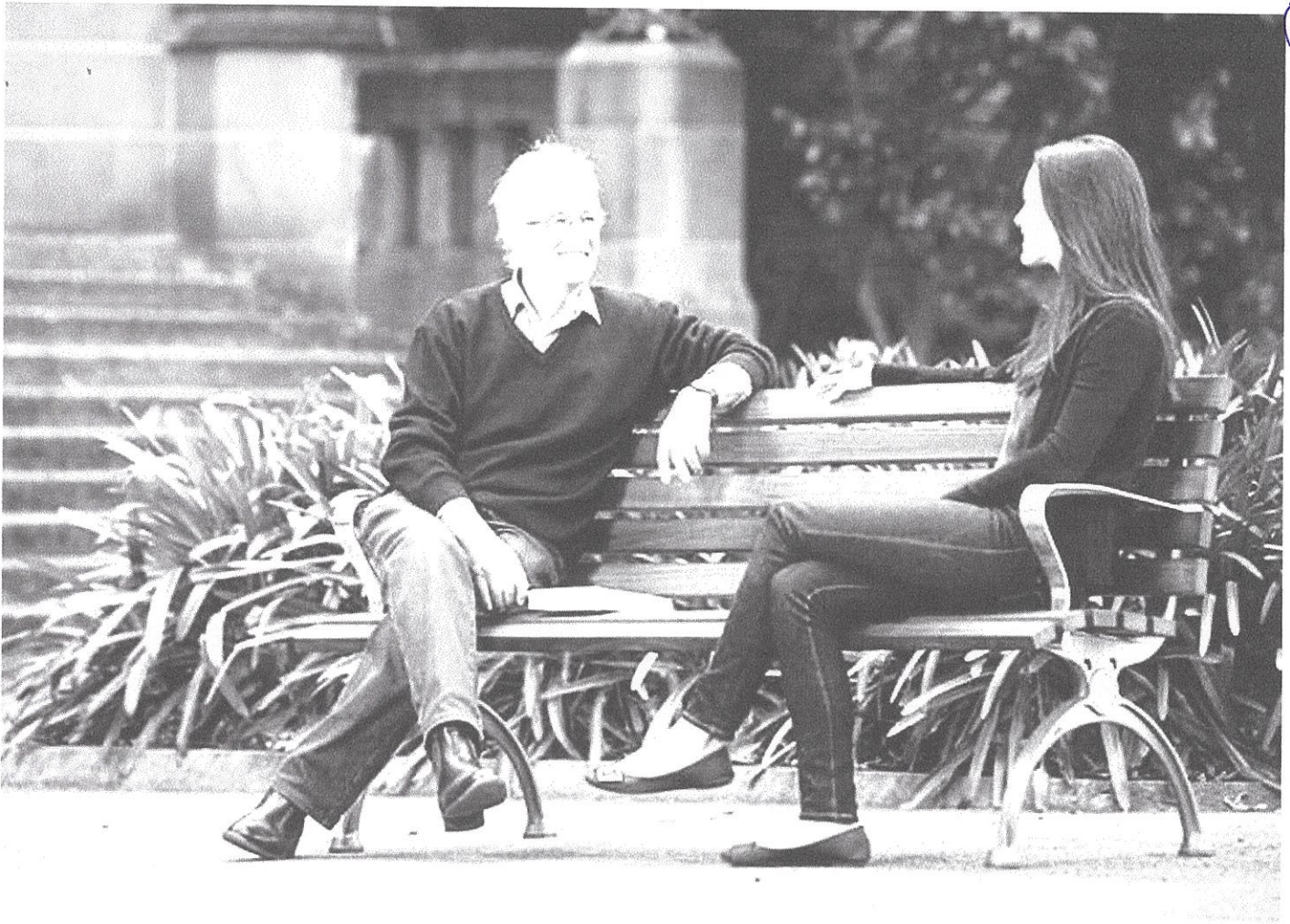
Zooming out from individual places, on a macro level there is a need for cities to provide benches for resting throughout parks and streetscapes for optimum hospitality.

An ageing population, for example, requires enough seats to break a journey into manageable walking distances, and protected positions that feel safe for sitting.

* "A good rule of thumb for a good city is that suitable places to sit should be located at regular intervals, for example, every 100 metres," says Gehl. (328 feet)

In terms of seating design, older people are best supported with wide armrests and upright angled backs that make it easier to get up and down.

"A well-equipped space should offer many different opportunities for sitting in order to give all user groups inspiration and opportunity to stay," he says.



Mall DDA seats feature DDA iterations and curves to allow people to sit for longer.

Point 3. Combine primary and secondary seating

“Design with the right balance of primary and secondary seating to give the impression that a space is comfortable and popular even when there are only a modest number of users present,” says Gehl.

Primary seating – that is, benches and chairs – facilitate comfort, particularly for senior citizens. Gehl advises that an adequate amount of primary seating should be provided and strategically placed to offer users as many advantages as possible.

Secondary seating, for the more sprightly sitter, refers to stairways, steps, plinths, low walls and blocks and allows more people to enjoy the space at peak times.

Gehl is a big fan of 'sitting landscapes' that feature multipurpose elements like staircases that double as lookouts, or monuments and fountains that beautify a place, add to its identity and historic context, and provide wide terraced bases for several people to sit.

Venice, he notes, has designed its street lamps, flagpoles, statues and buildings so it is possible to sit on them – "the whole city is sittable," he says.



Venice: A sittable city

Subscribe to StreetChat (<https://streetfurniture.com/win-papillionaire-bicycle/>) before October 31, 2017, for your chance to WIN a stylish Papillionaire bicycle valued at \$599.

posted on

29 August 2017, by Editor

topics

April 4, 2022

Attn: Ben White
DNR

Good Morning from Gustavus!

Over the years I have written many letters, made many calls, and talked with many folks on both sides of this bench issue.

I was raised from birth here in Gustavus, went to school here, worked, and raised my girls here. I was on Parks + Rec Committee and Bench Committee. I served on Bench w/ cousin Morgan DeBoer.

I've seen many changes over my 68 years here. One I had hoped would never arise was losing ability to get out + enjoy our beautiful beach. As a child I played on beach, as a teenager we camped there often, yes we also had ATVs + dirt bikes there. Over the years we gathered firewood, picked berries, harvested seaweed for gardening. We used to watch barges pull in to beach + off load various freight + equipment. In recent years I have had health issues that have resulted in limited mobility. I would use my truck daily, and still get to at least enjoy the view from the beach.

I do not like the log barriers put in place. It became impossible for me to get to a good viewing place to see water + mountains, and have a peaceful place to sit and reflect on whatever.

4-4-2022

pg. 2

Die had to try to substitute by sitting in truck on little "island" to see my balcony over.

No more picnics on west side either, due to inability to walk to designated spot. Die had no desire to have a picnic next to a busy dock + road.

I had proposed in past at least keeping road open to bench + picnic spot with some handicap parking available. That was done for awhile, then when that was over.

I did count at one time, and there were 185 folks in Gustavus over age of 60. As we age, we still need to be allowed access to our quiet spots.

Die analyzed some of my ideas that I submitted last fall to Gustavus City Council.

Thank you for the opportunity to express my views to you.

Sincerely,
Sylvia Pederson

home 907-697-2433

cell 907-723-2611

email sylvia_pederson@katmail.com

cc Gustavus City
Jeff Jarvis e P.O.T.